



# GAT MONTHLY MEMBERSHIP PROGRESS REPORT

Results as of: 6/30/2023

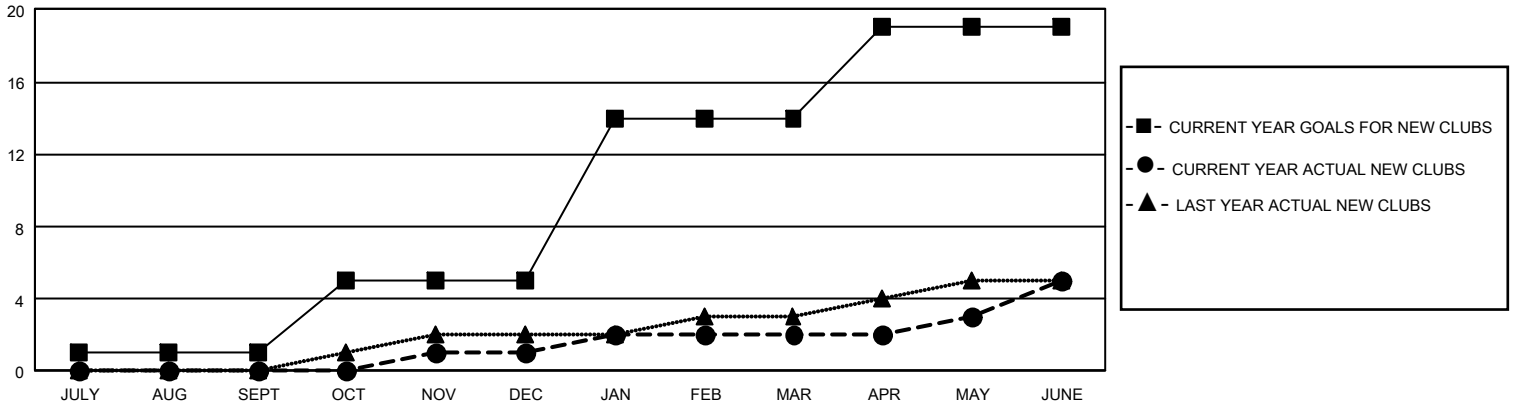
## GMT Constitutional Area 3, Group G

REPORT DOES NOT INCLUDE CLUBS IN UNDISTRICTED AREAS.

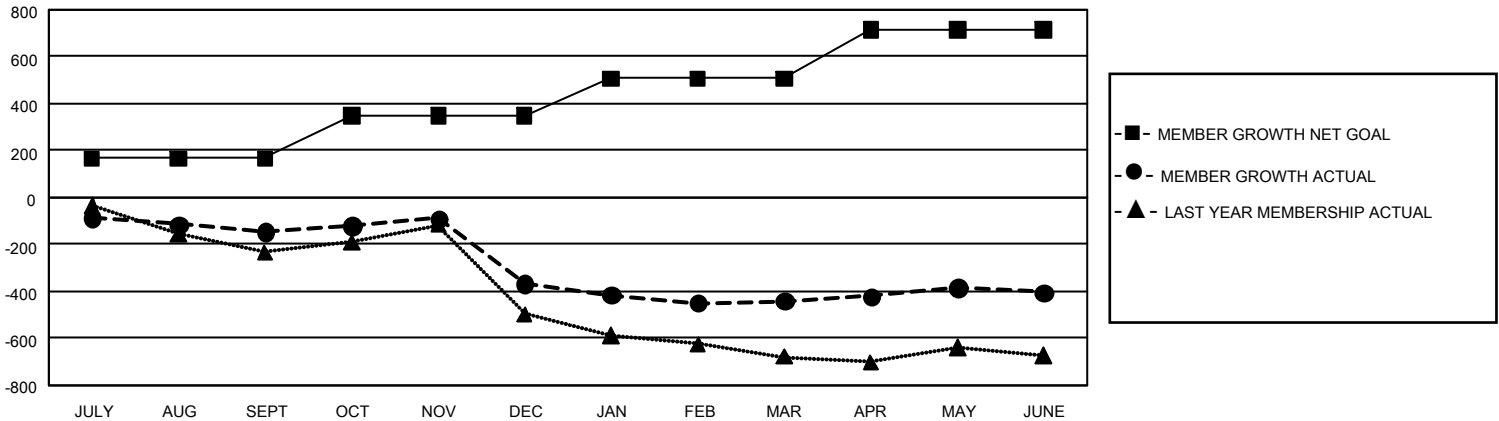
Clubs			
RESULTS FOR 2022-2023			
QUARTER	NEW CLUB GOAL	NEW CLUBS	DROPPED CLUBS
JULY/AUG/SEPT	3	0	6
OCT/NOV/DEC	12	1	13
JAN/FEB/MAR	27	1	4
APR/MAY/JUNE	15	3	5

Members			
RESULTS FOR 2022-2023			
QUARTER	MEMBER GROWTH NET GOAL	MEMBER GROWTH ACTUAL	DROPPED MEMBERS ACTUAL (including transfers)
JULY/AUG/SEPT	167	224	326
OCT/NOV/DEC	182	352	532
JAN/FEB/MAR	158	271	300
APR/MAY/JUNE	206	743	591

GOALS AND ACTUAL NEW CLUBS CUMULATIVE



GOALS AND ACTUAL MEMBERS CUMULATIVE



<b>DROPPED CLUBS: 28</b>	277 CLUBS OF 498 ADDED 1 OR MORE NEW MEMBERS	<u>GENDER DISTRIBUTION</u>	
<u>DROPPED MEMBERS</u>		MALE	5,748 (53.09%)
DECEASED	112	FEMALE	5,077 (46.90%)
CLUB CANCELLED	229	NON BINARY	0 (0.00%)
OTHER	1,408	PREFER NOT TO ANSWER	1 (0.01%)
<b>TOTAL</b>	<b>1,749</b>	TOTAL FAMILY UNIT MEMBERS	4,683
	<a href="#">CLICK HERE FOR CUMULATIVE MEMBERSHIP DATA</a>	FAMILY MEMBERS PAYING HALF DUES	2,471